

BP Phase? 2 charts



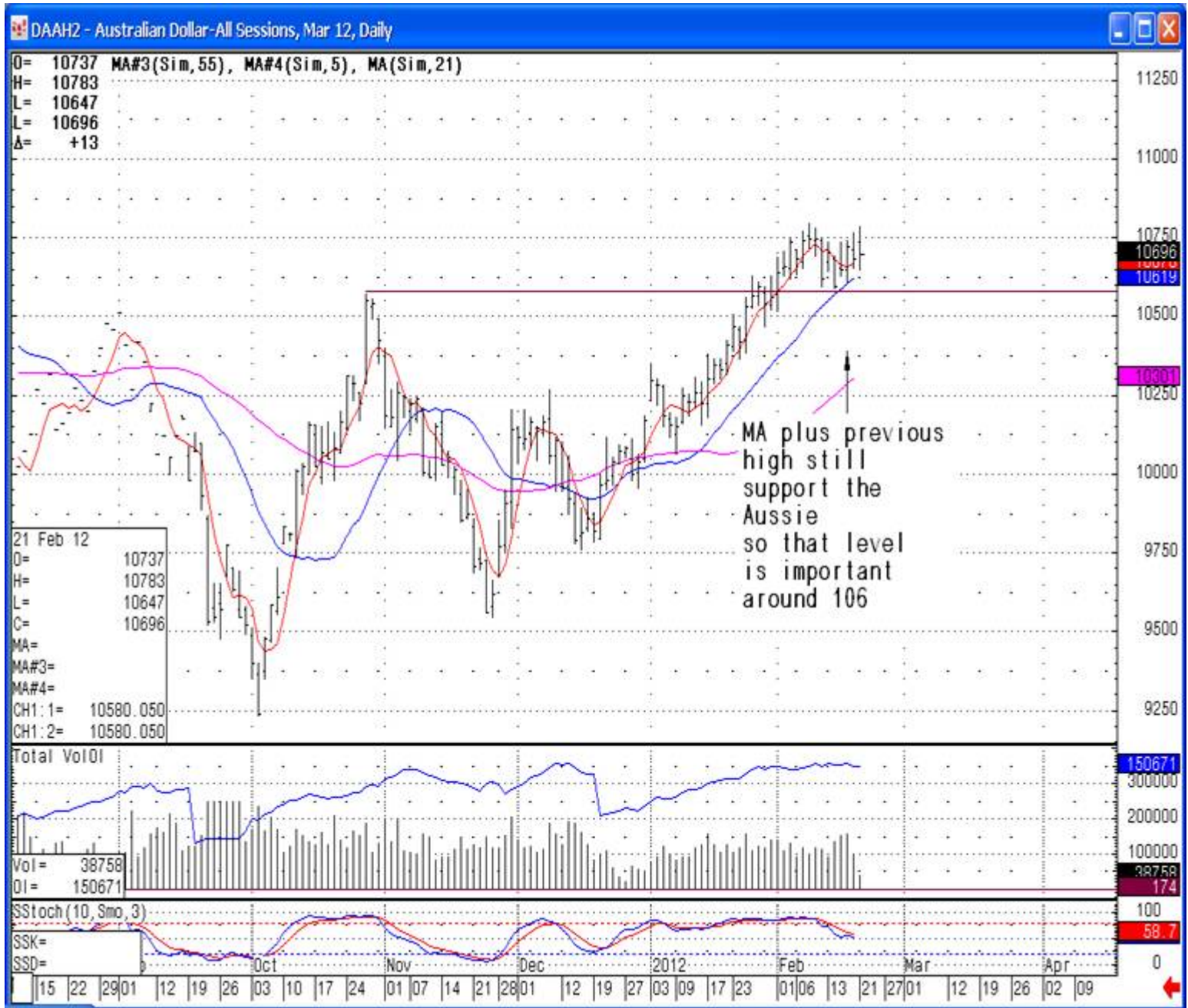
Not sure



Crude trendline?



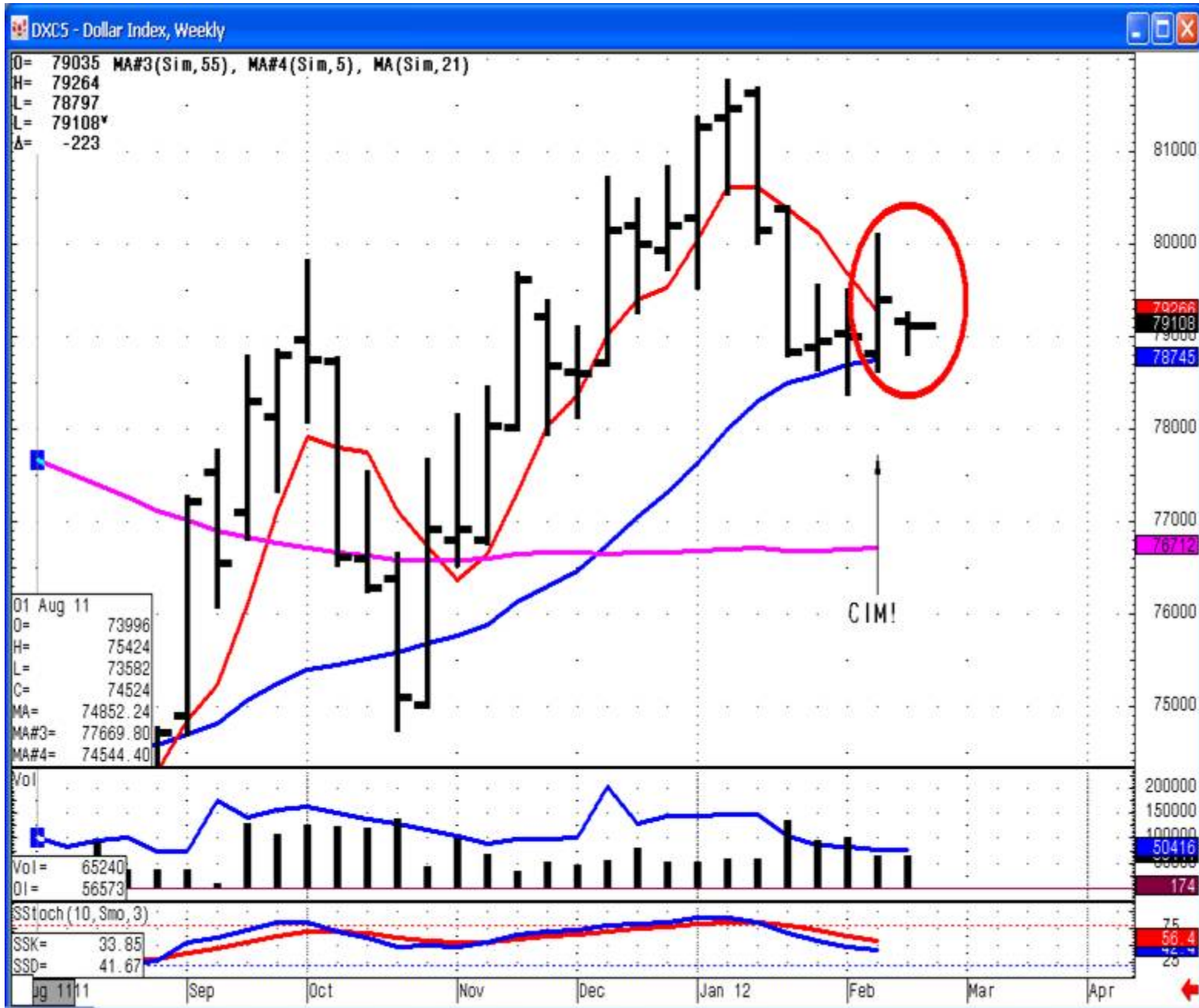
Aussie 2 charts



Today—testing the 106 again



Dollar weekly==CIM





Yen gave big signal



More hype from Mark Hulbert

Now Wilshire 5000 3 charts

Forget Dow 13,000; real story is Wilshire 5000

February 21, 2012, 12:06 PM

All eyes this morning have been focused on the psychologically important levels on the Dow Jones Industrial Average [DJIA](#) (13,000) and the NASDAQ Composite [COMP](#) (3,000).

[Read more on U.S. stocks.](#)

But that focus has diverted our attention from an even bigger story with far more investment significance: The

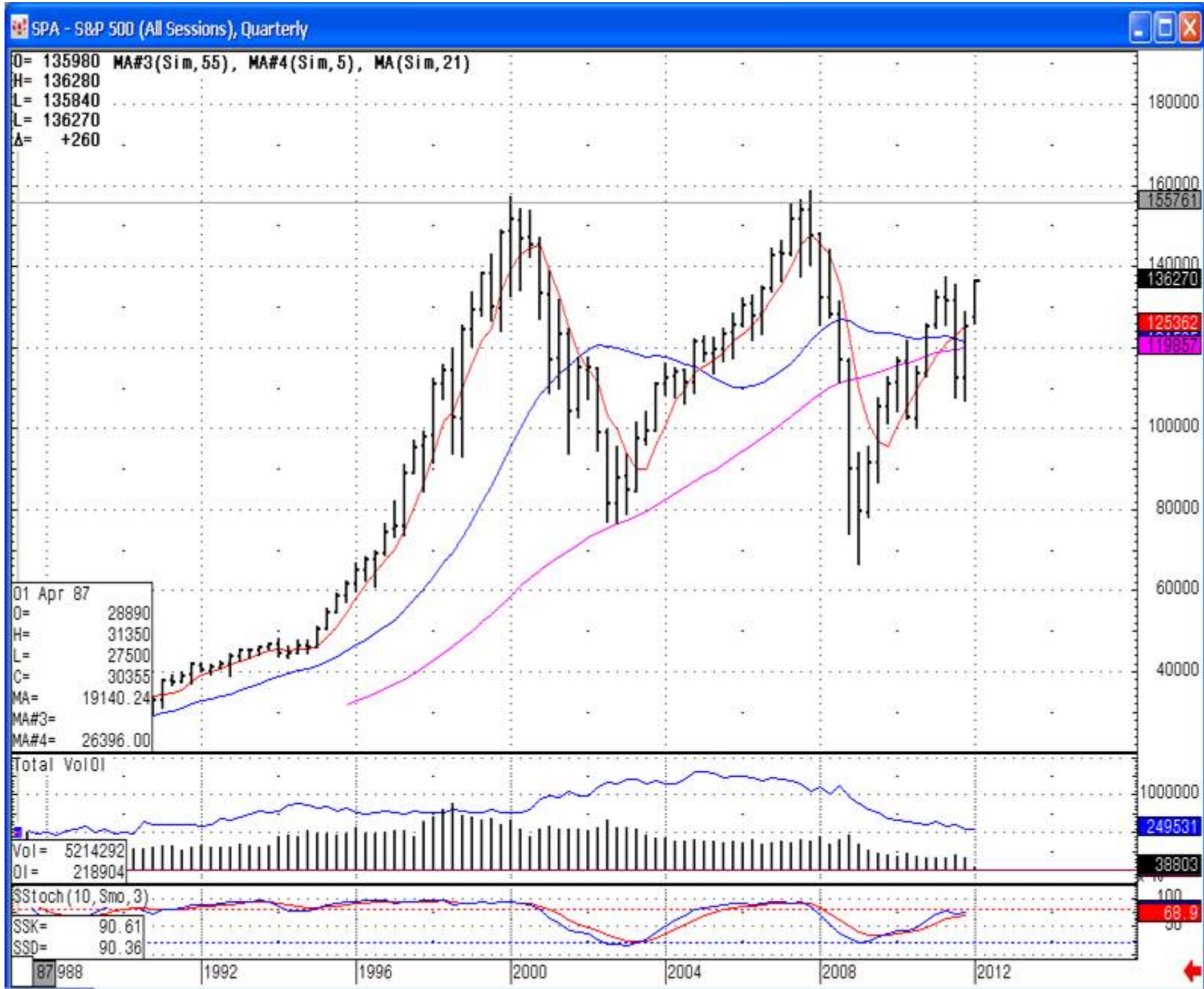
//////.....

That's incredible. The worst bear market since the 1930s is on the verge of being erased in just three years' time.

– Mark Hulbert

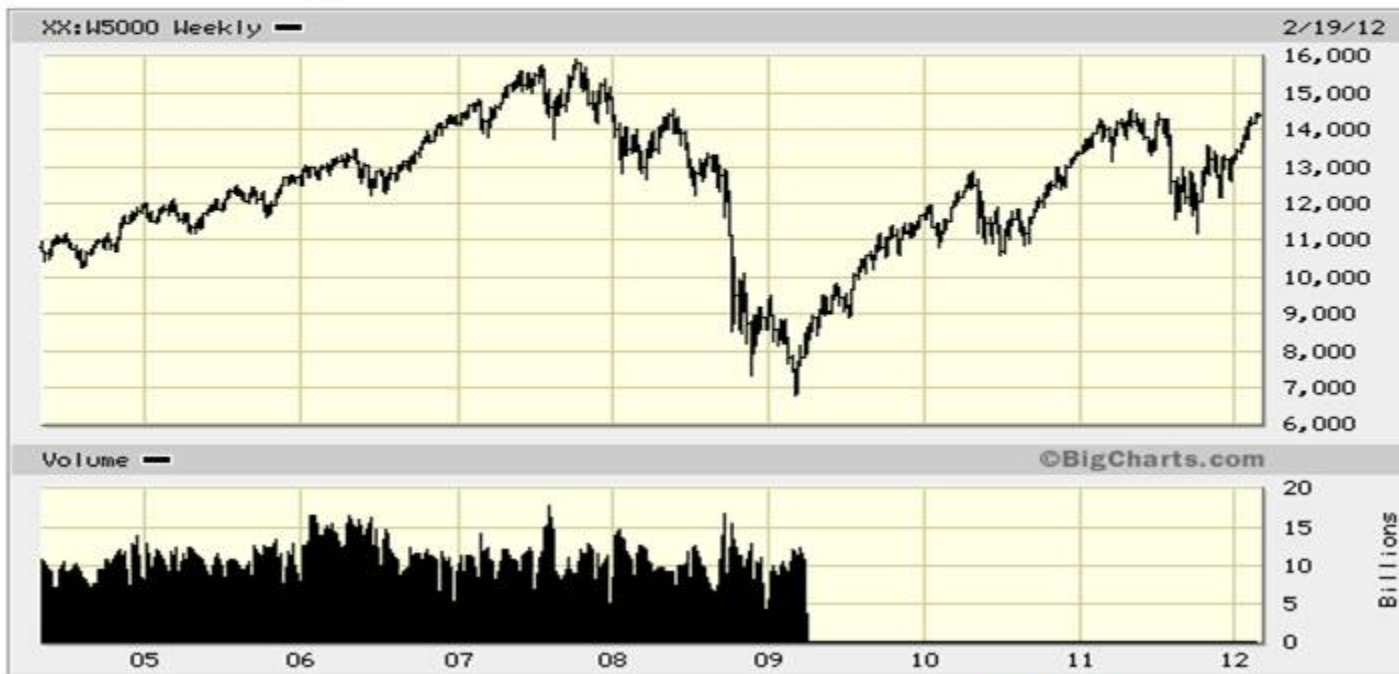
Is this true?

S and p



Wilshire 5000 symbol on stockcharts and others== XX:W5000. From BigCharts ALL DATA goes back only to 2004

XX:W5000 Wilshire 5000 Total Market Full Cap Index (INDEX) Delayed quote data				2/21/2012 05:30 PM	
hide quote	detailed quote	options chain	chart help ?		
Last: 14,388.28	Change: -12.20	Open: 14,400.48	High: 14,453.30	Low: 14,343.79	Volume: n/a
	Percent Change: -0.08%	Yield: n/a	P/E Ratio: n/a	52 Week Range: 11,208.42 to 14,562.01	



[Find a broker](#)

More like double top—but certainly not new all time high

Here is full data from the nasdaq site

<http://www.nasdaq.com/symbol/wlx/interactive-chart>

Interactive Stock Chart - Wilshire 5000 (WLX)

Related: [Stock Charts](#) [Free Stock Charts](#) [Trade Stocks](#) [Online Stock](#)

Tip: Right click the chart for underlying data and printing. Visit our [FAQs page](#) for more tips.

[Compare](#) [Technical Indicators](#) [Events](#) [Settings](#)

.WLSH Last: 14,317.52 Change: ↓ -13.70 (-0.10%) Volume: 0 Time: Feb 21, 2012 WILSHIRE 5000 INDEX TOTAL RT



■ Volume/month

80

Value line is even MORE BULLISH

[2008 2002] \$VLA Open: 1,202.00 High: 1,206.00 Low: 1,202.70 Close: 1,217.10

\$VLA - Value Line Index - Monthly OHLC Chart



Want more hype?



The Cody Word » CODY WILLARD

How Apple gets to \$1000

February 21, 2012, 11:59 AM

COMMENTARY By CODY WILLARD

It's an endless source of angst, hope, fear, optimism and fodder for my readers — Apple's [AAPL -0.26%](#) current trading and investment set up. For me, personally, it's still our biggest position and there's a whole lot of cross currents around this company and stock right now.

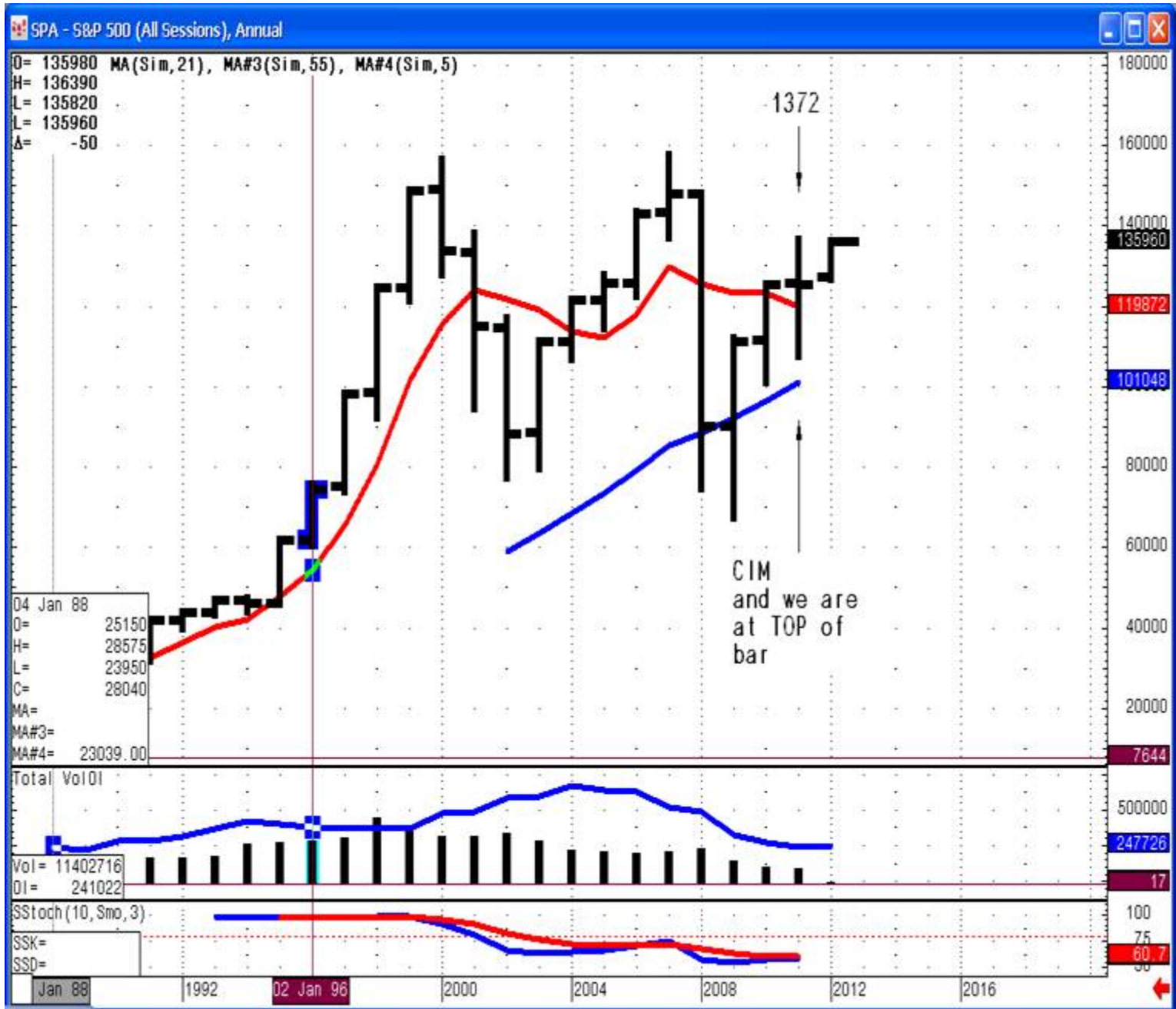
First, the good:

*Apple's still one of the cheapest stocks in the market and it's still one of the fastest growing stocks in the market. That's been true of this stock even as it has rallied 7100% since I first flagged it for you guys.

*The iPad 3 is coming and it's going to be huge-huger than either of the prior iPad 1 or 2. Notice how the iPhone 4S has outsold every other version of the other, also wildly successful past iPhone models? Same will be true with iPad 3 and iPad 4. And that's going to be a huge growth driver for the top and bottom line for Apple.

*The iPhone 5 is coming and it's going to be huge-huger than any of the prior iPhones — see the above bullet point

The real picture comes from the yearly chart—



Crb daily??



David's letter from the 20th is important. The significance of the FIRST LOW FROM THE LAST HIGH etc. Needs to be discussed.

It relates to simple Elliot (wave 3 is the strongest)

It relates to the concept of swing thrust (higher time frame)

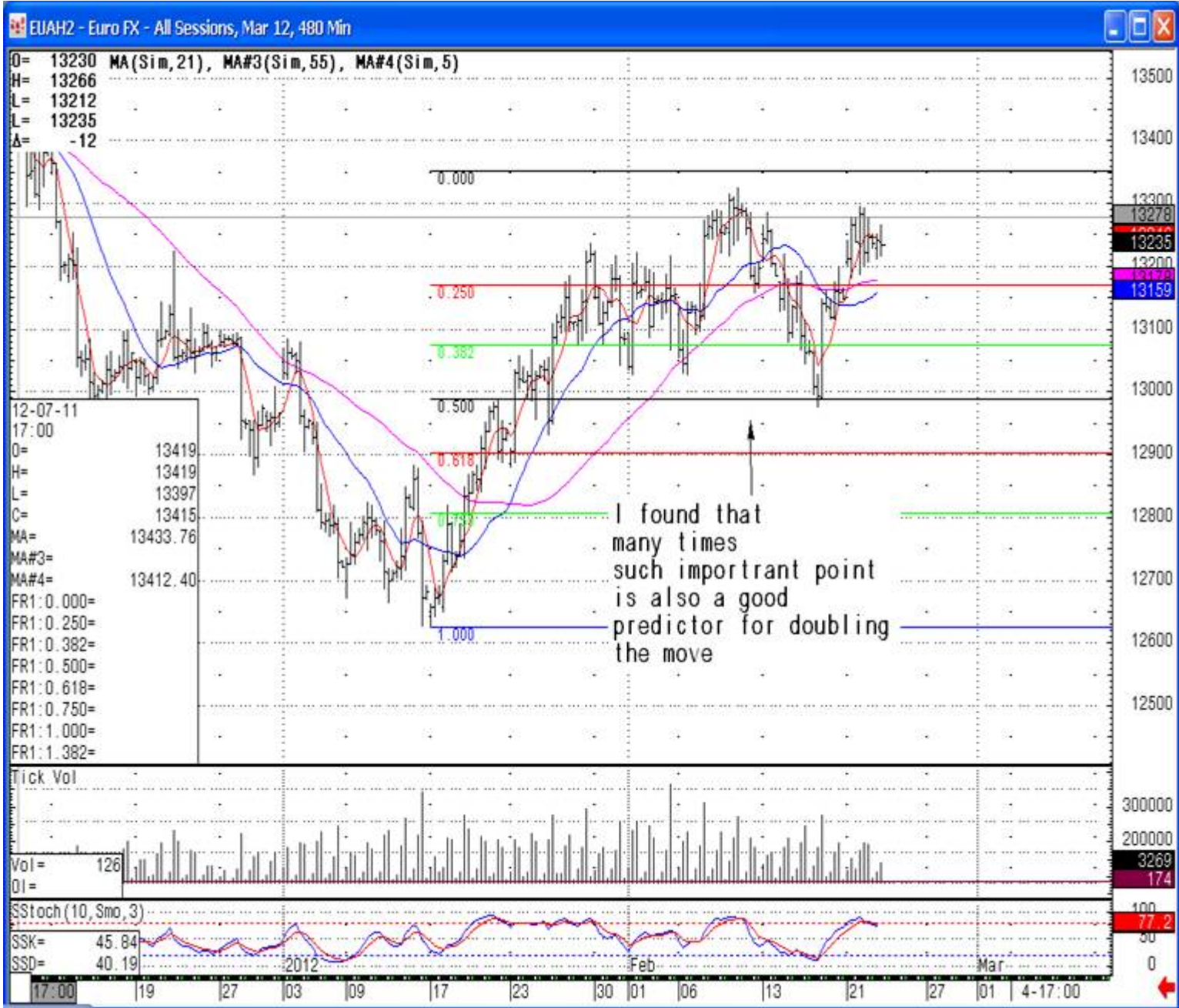
It relates to LLBH and LHBL—in a reverse manner

But it is basically--- comparing of important swing highs and lows structures!!!

Much wisdom—but needs work and patience

Kind of example in euro 8 hours chart





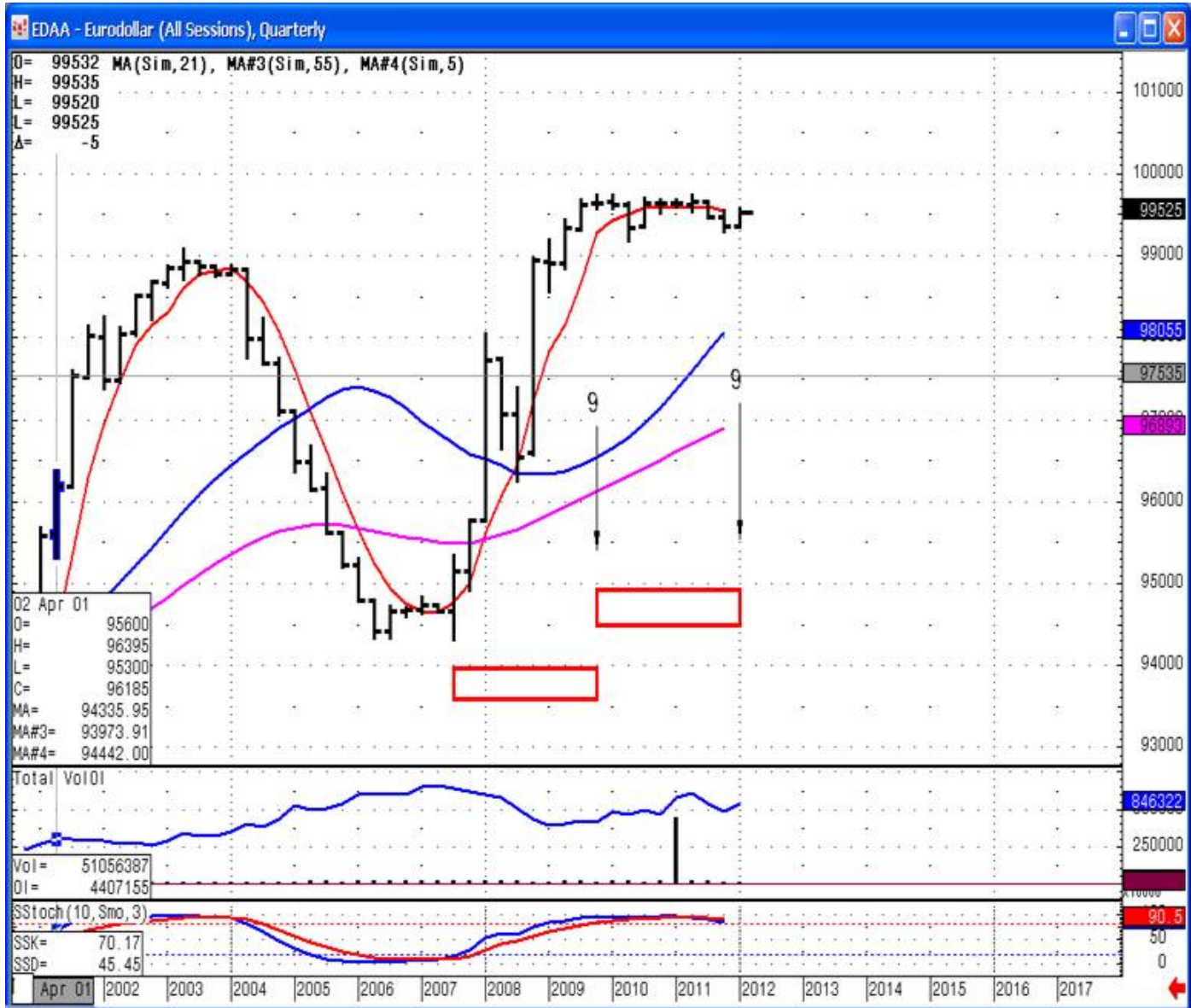
GOLD



Soybeans 50%



ED possible 9 quarters phases?



Source: CQG Inc. © 2012 All rights reserved worldwide. <http://www.cqg.com>

Wed Feb 22 2012 12:56:03

There is a substantial risk of loss in trading commodity futures, options and off exchange foreign currency products. Past performance is not indicative of future results.