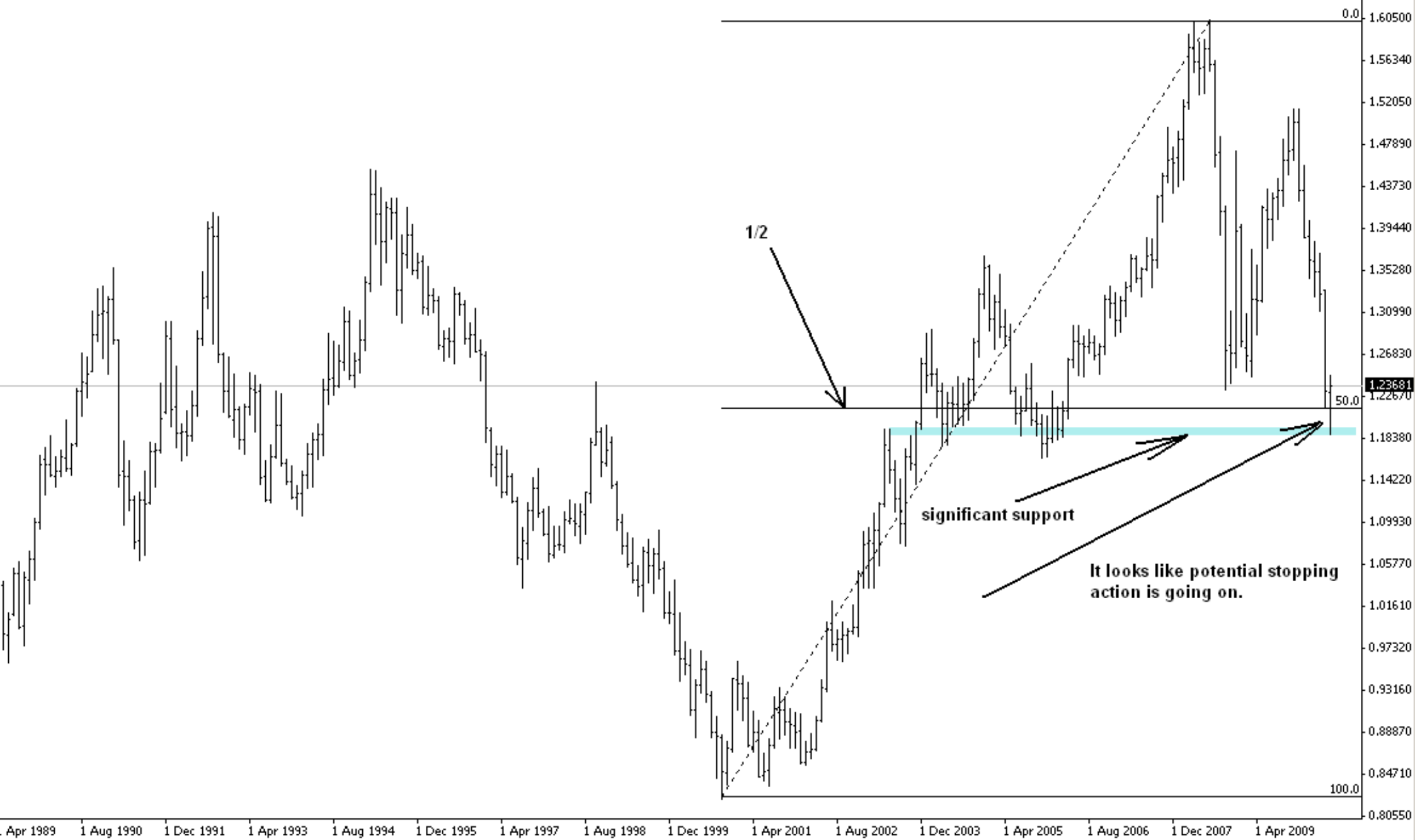


EURUSD,Monthly 1.23076 1.24664 1.18758 1.23681



1/2

significant support

It looks like potential stopping action is going on.

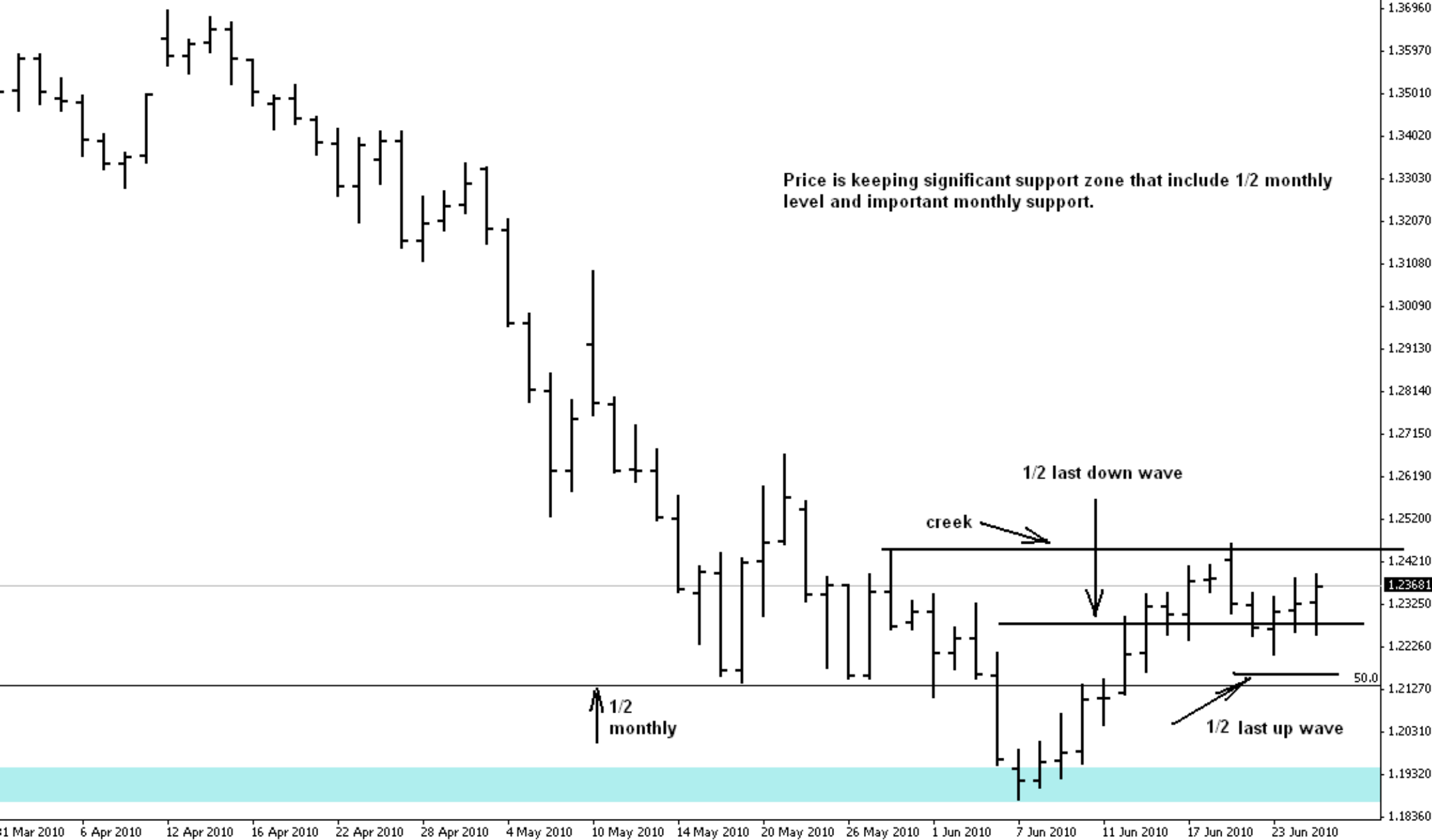
100.0



I believe that we have to wait June's close to understand what is going on.

1255.45

EURUSD, Daily 1.23276 1.23942 1.22538 1.23681



Price is keeping significant support zone that include 1/2 monthly level and important monthly support.

1/2 last down wave

creek

1/2 monthly

1/2 last up wave

50.0

1 Mar 2010 6 Apr 2010 12 Apr 2010 16 Apr 2010 22 Apr 2010 28 Apr 2010 4 May 2010 10 May 2010 14 May 2010 20 May 2010 26 May 2010 1 Jun 2010 7 Jun 2010 11 Jun 2010 17 Jun 2010 23 Jun 2010