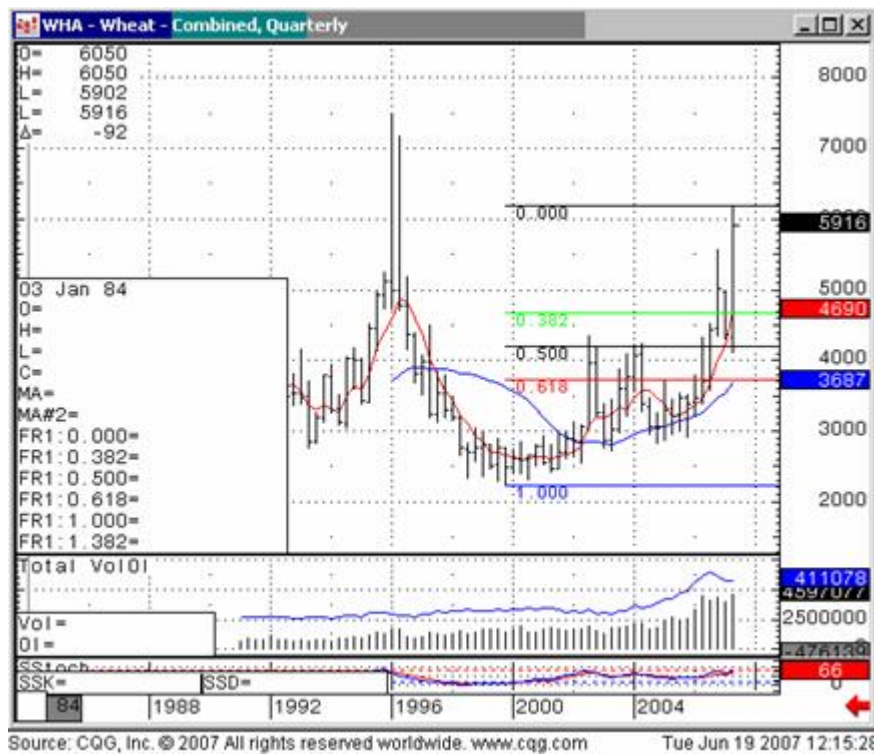


## 8. Wheat quarterly



Very large quarter—needs rest  
 Again perhaps that 50% projection spells end of move

## 9. Silver—DISCUSS



10, copper



Amos

DISCLAIMER:

The information of this report has been obtained from sources believed to be reliable, but is not necessarily all-inclusive and is not guaranteed as to the accuracy, and is not to be construed as representation by our firm. The risk of trading futures and options can be substantial. Each investor must consider whether this is a suitable investment. Past performance is not indicative of future results.