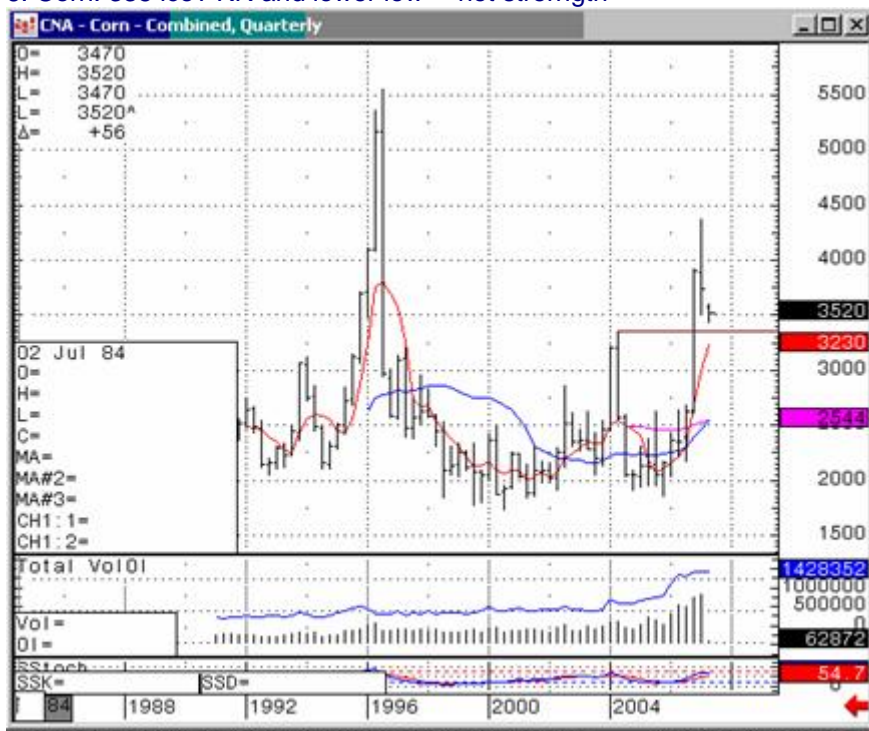
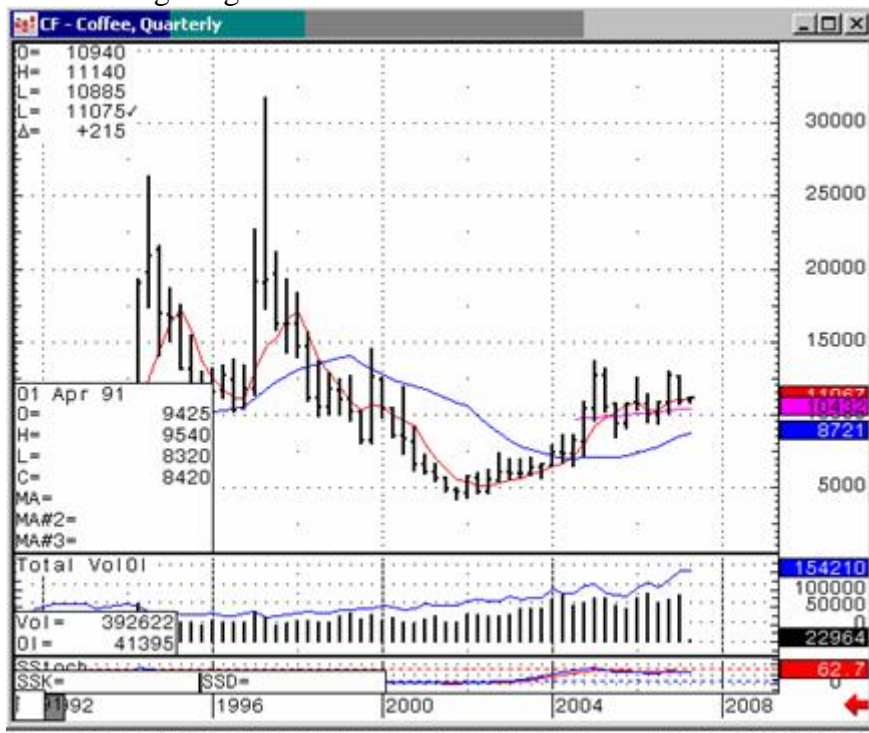


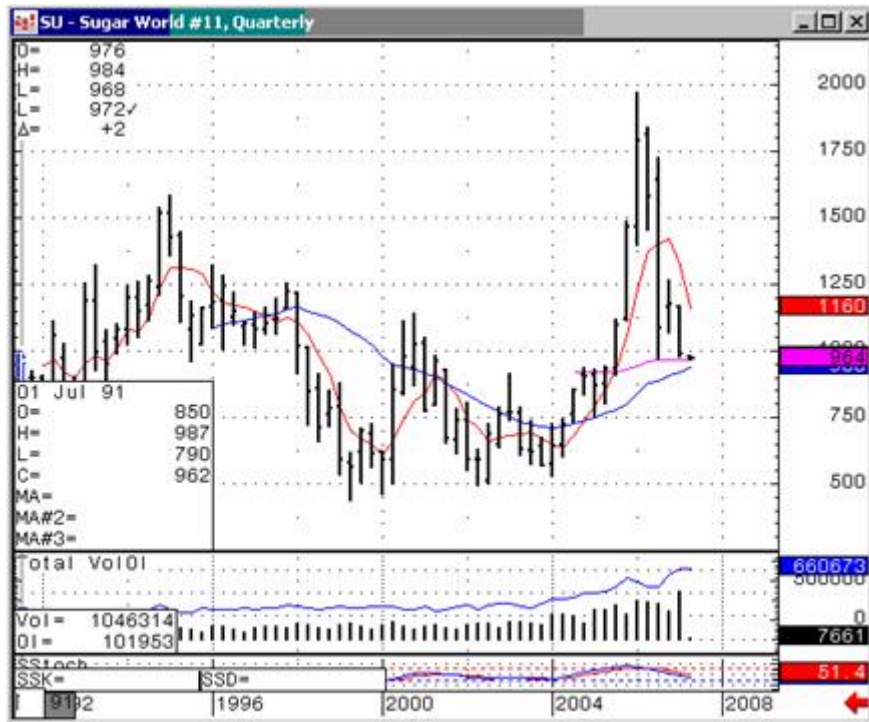
6. Corn. 335 ice? KR and lower low--- not strength



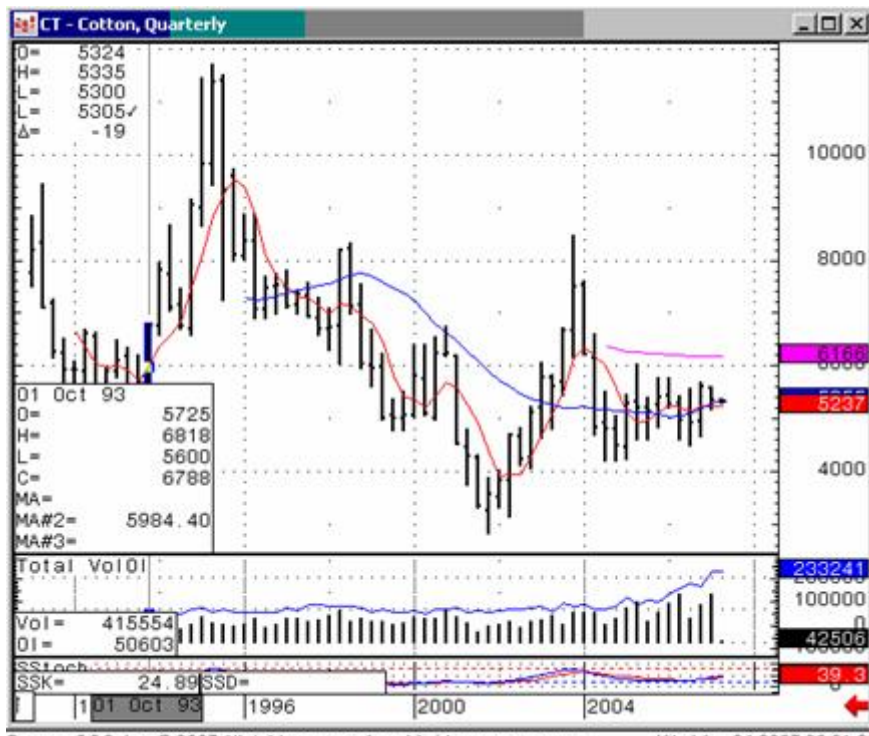
7. coffee== gazing starbucks



8. sugar -not sweet. 980 is area of support. But no demand here



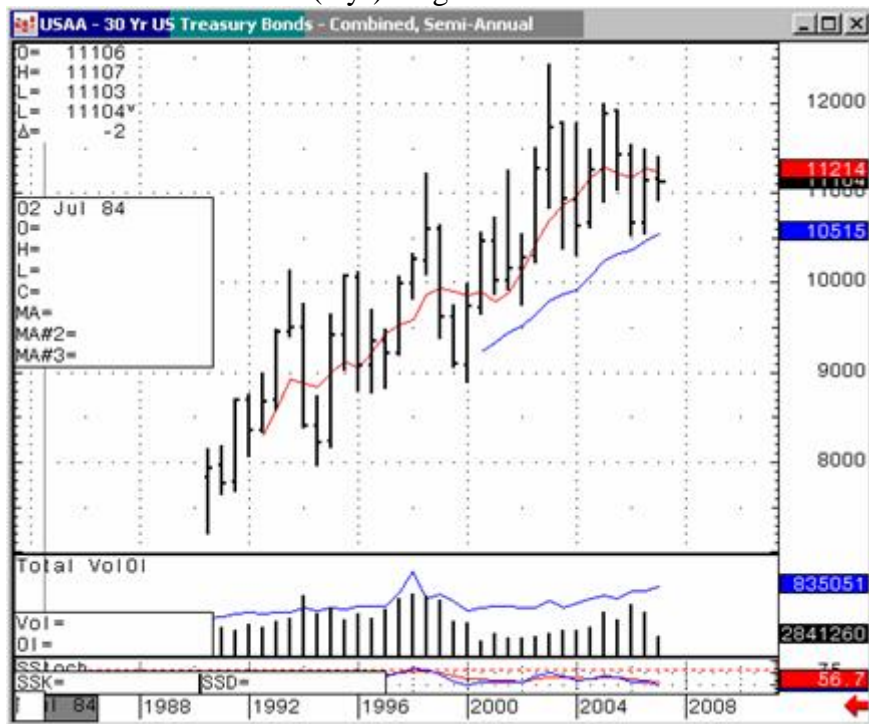
9. Cotton—45-57/60...11 Q already



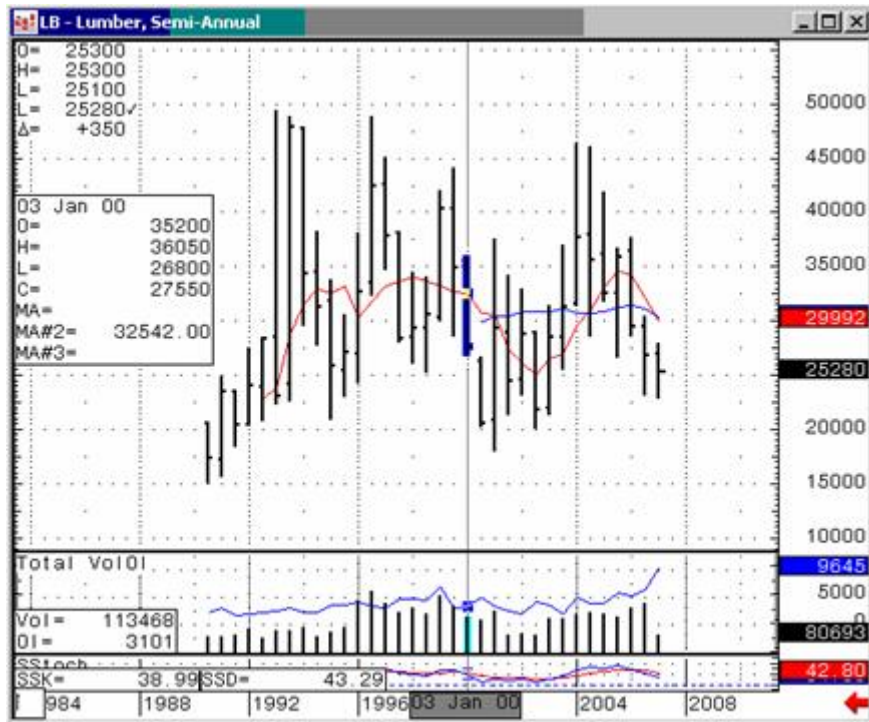
10. Crude. 34 Q from bottom (1998) Hook reversal?



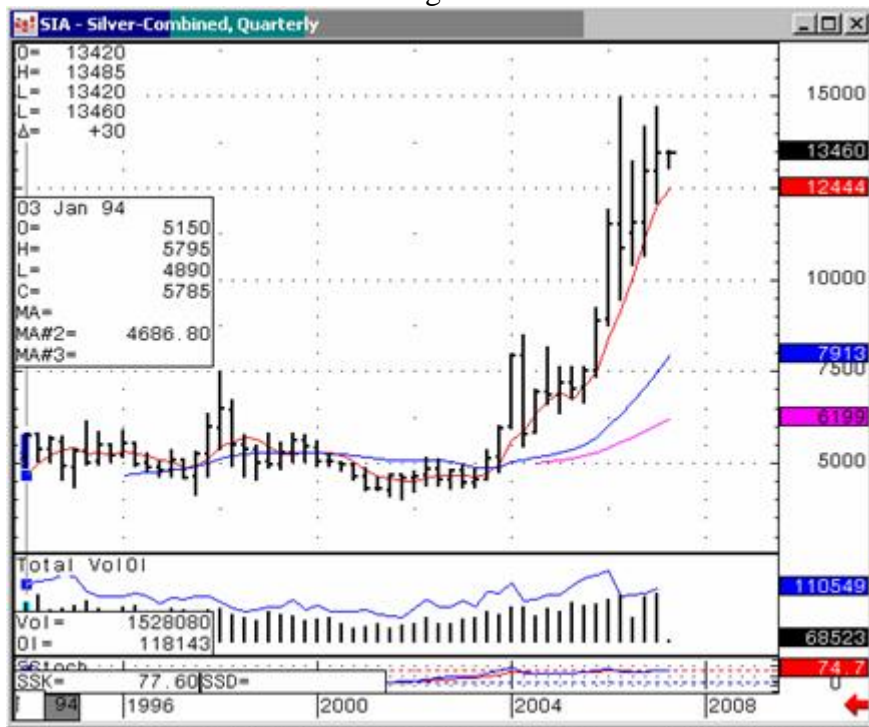
11. Bonds Semi: 8 bars (4 yr) range.



12. Lumber—"value" back to 1990? (Bonds were 75!)



13. Silver-closed in the Middle against DT



14 Nikkei??channel?



15, Aussie Major DT? Worth watching

