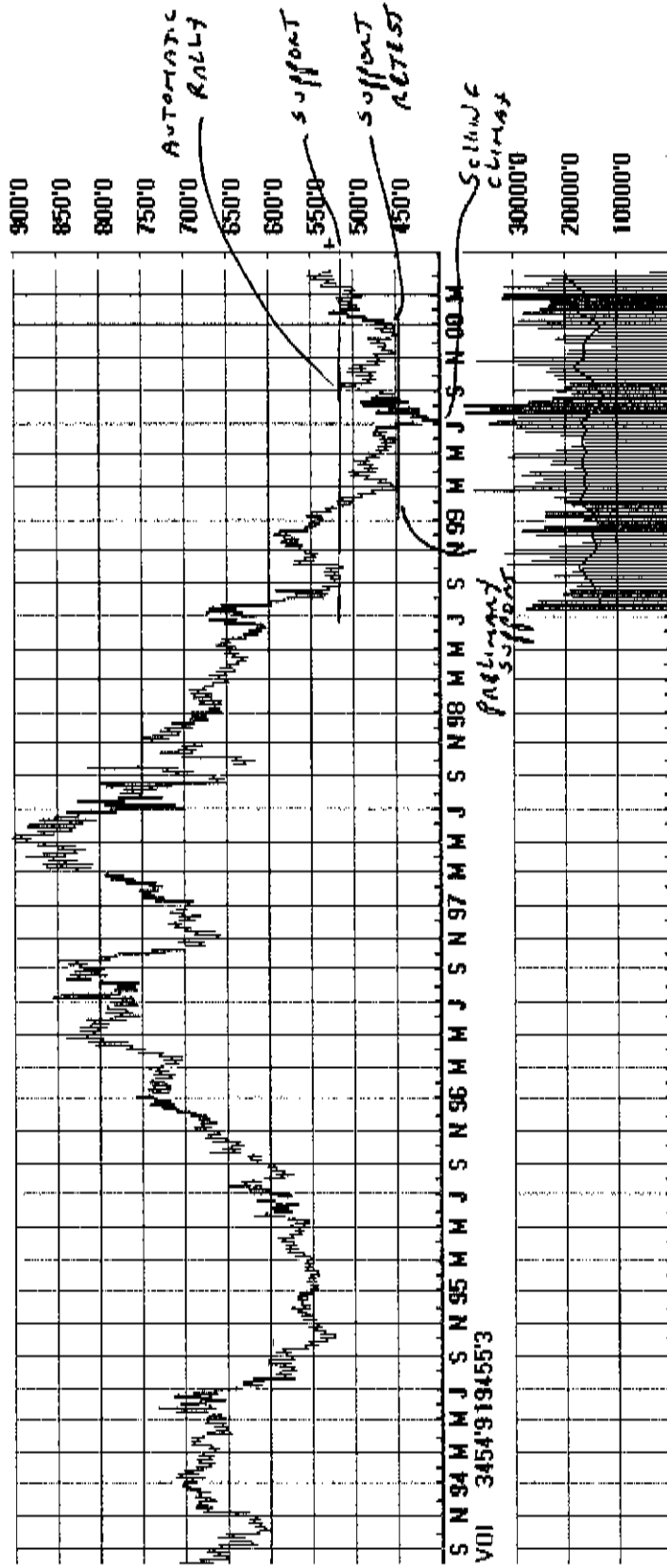


▶ S W Soybeans (Day) Change 528'0
Last 527'4 - 535'4
52-wk Range 401'4 - 554'0
Soy Beans
Weekly



► S M Soybeans (Day)

Last

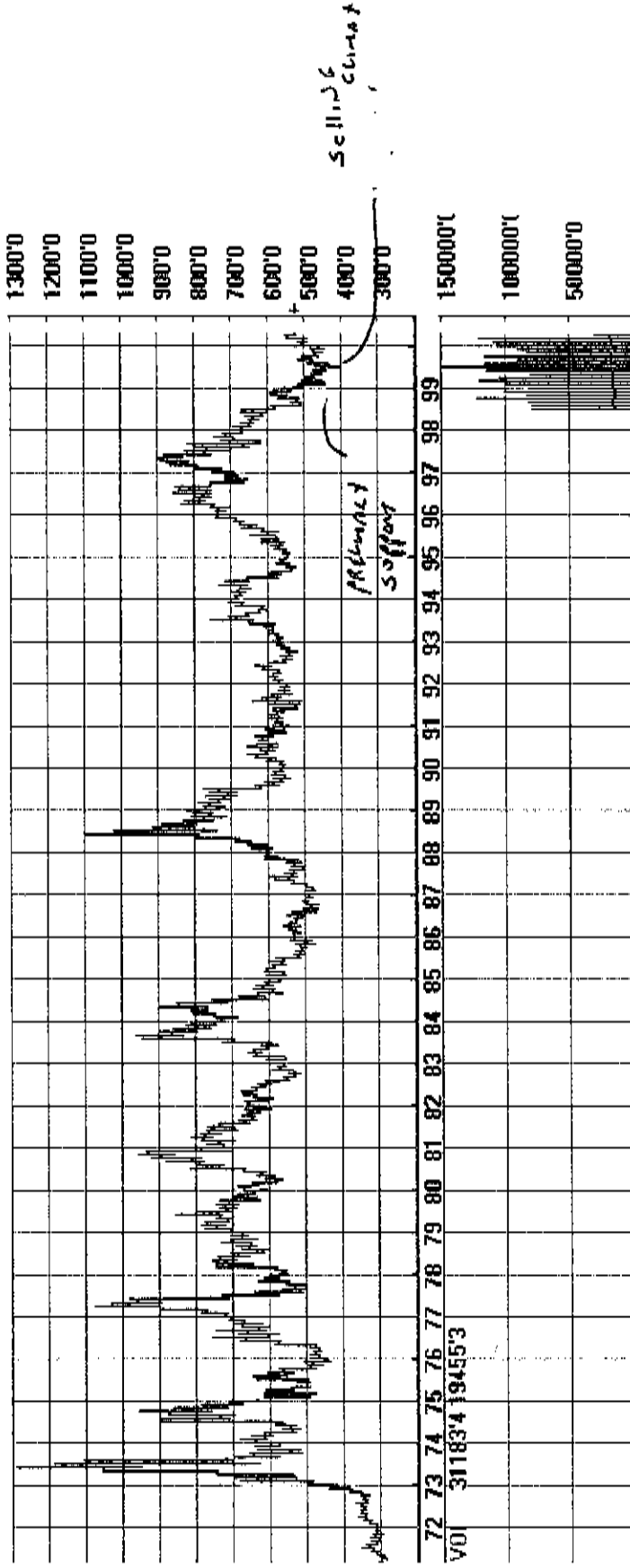
Change

528'0

BEANS
MONTHLY

Day's Range 527'4 - 535'4

52-wk Range 401'4 - 554'0



72 73 74 75 76 77 78 79 80 81 82 83 84 85 86 87 88 89 90 91 92 93 94 95 96 97 98 99

VOI 31183'4 19455'3

▲ C W Corn (Day)

Last

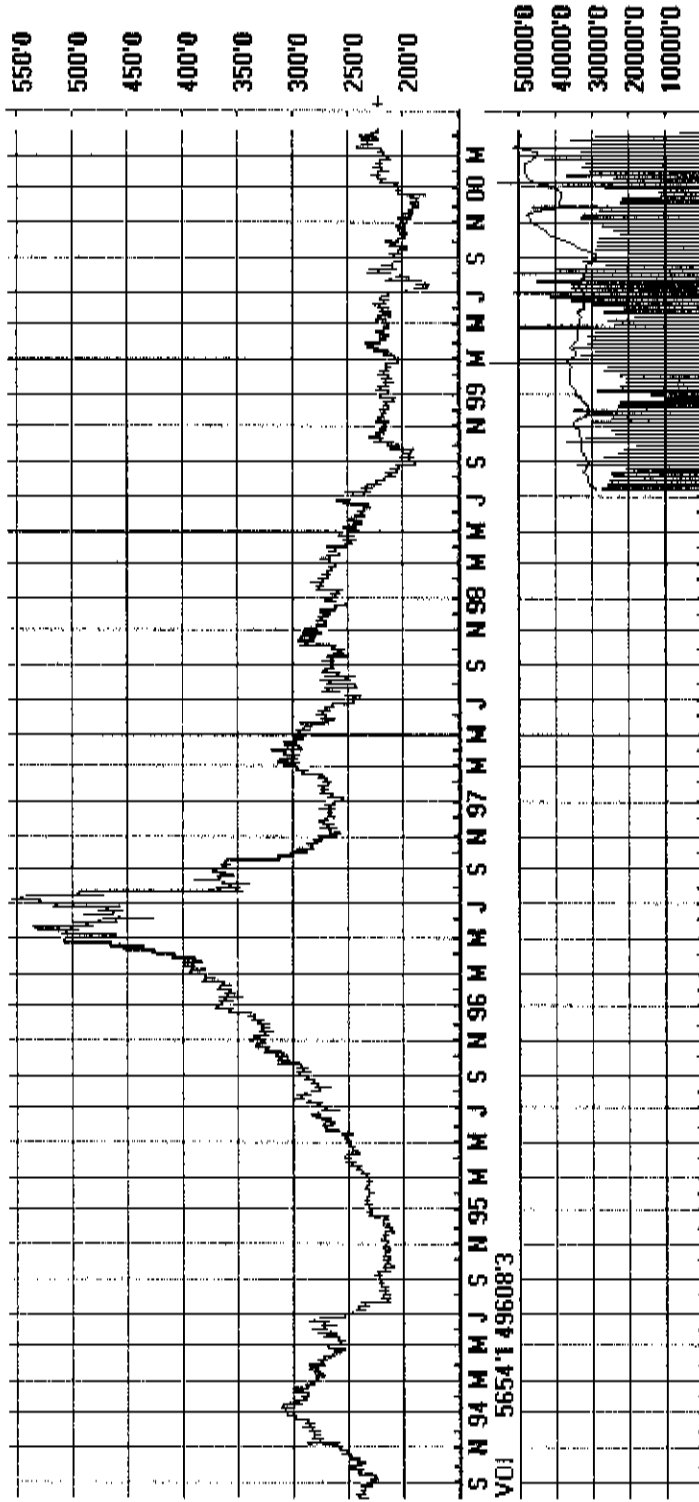
Change

223'2

W e e / L L /
CON

Day's Range 223'0 - 227'0

52-wk Range 177'0 - 241'6



*MONTHLY
CORN*

▶ C M Corn (Day)

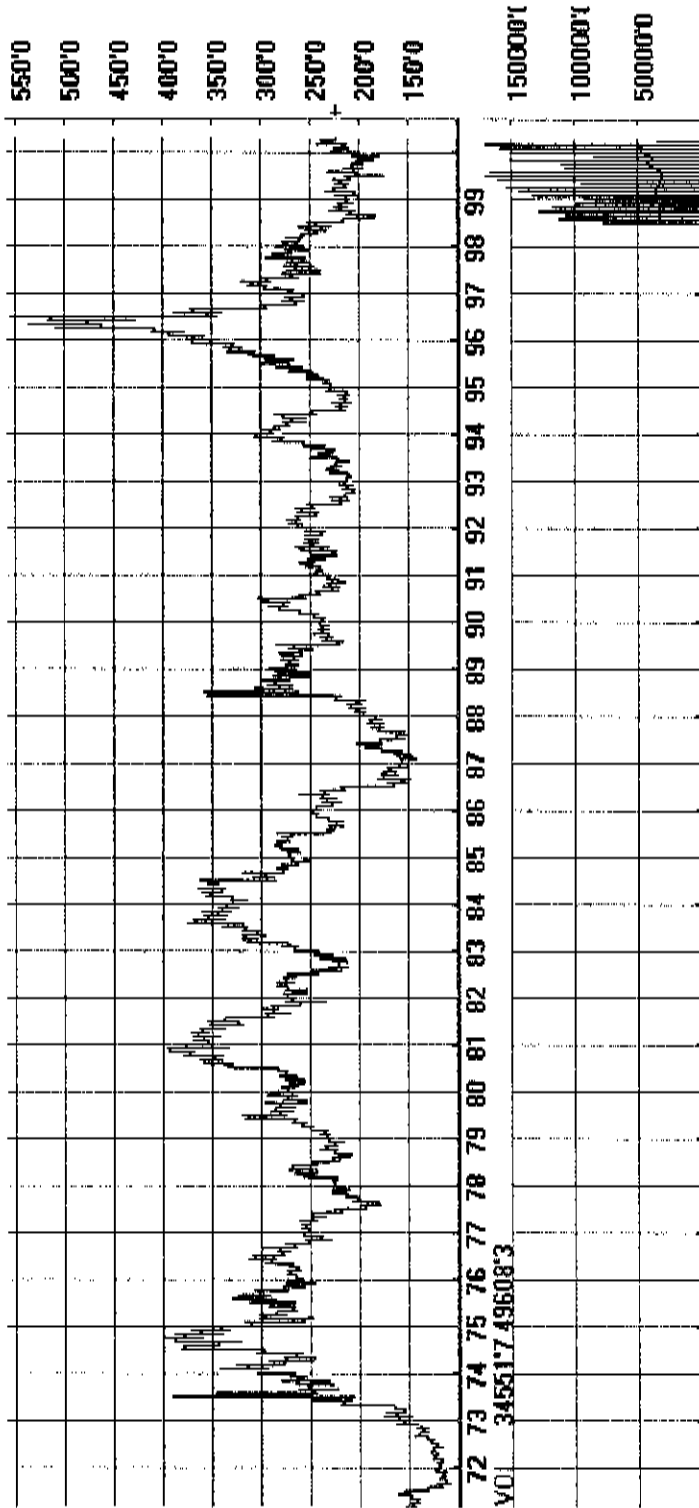
Last

Change

223'2

Day's Range 223'0 - 227'0

52-wk Range 177'0 - 241'6



Week
Candle
Oil

CL W Light Crude Oil
Last Change
24.10

Day's Range 24.07 - 24.29
52-wk Range 15.61 - 34.37

BUYER CLIMAT

RETEST COMING!

SUPPORT

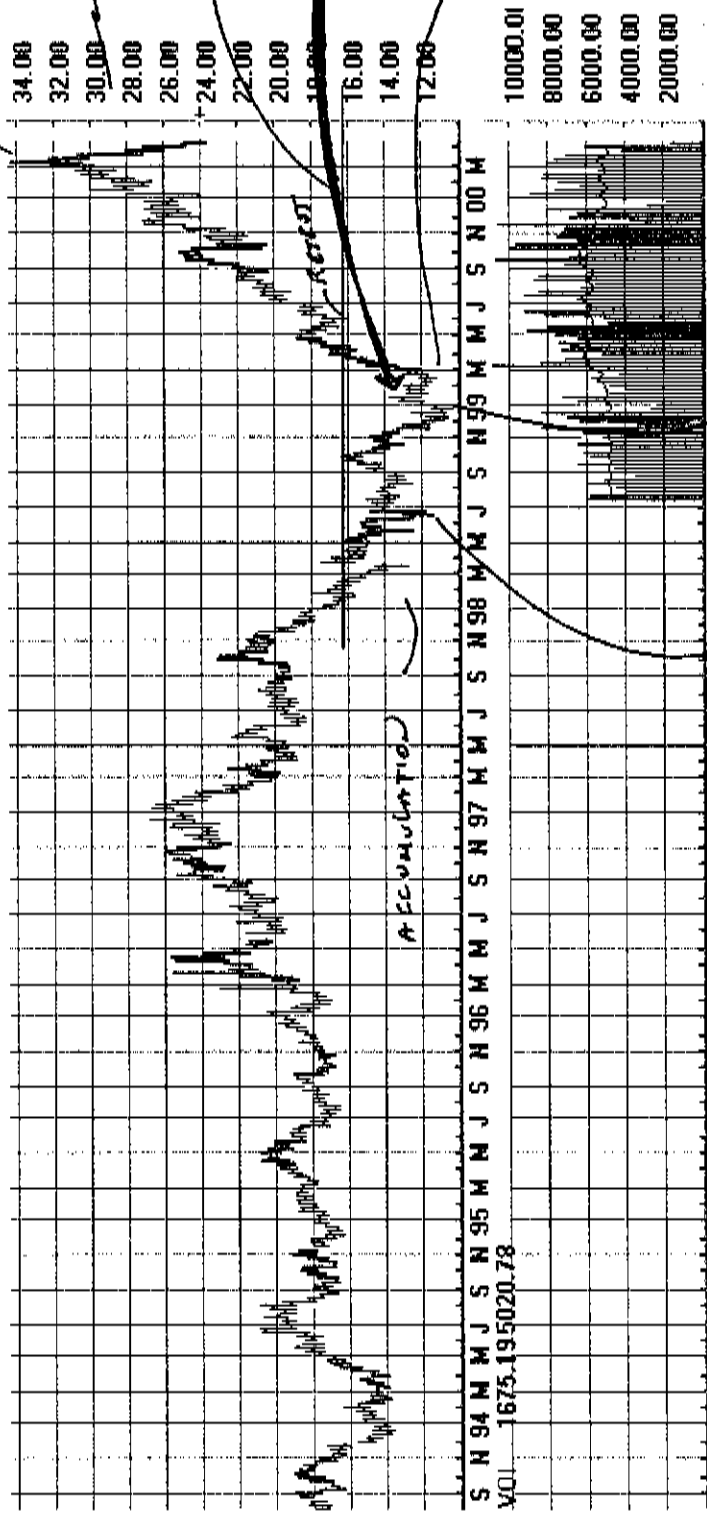
AUTOMATICALLY

RETEST

ACCUMULATION

SELLING CLIMAT

PRELIMINARY SUPPORT



MONTHLY
CRUDE
OIL

CL M Light Crude Oil

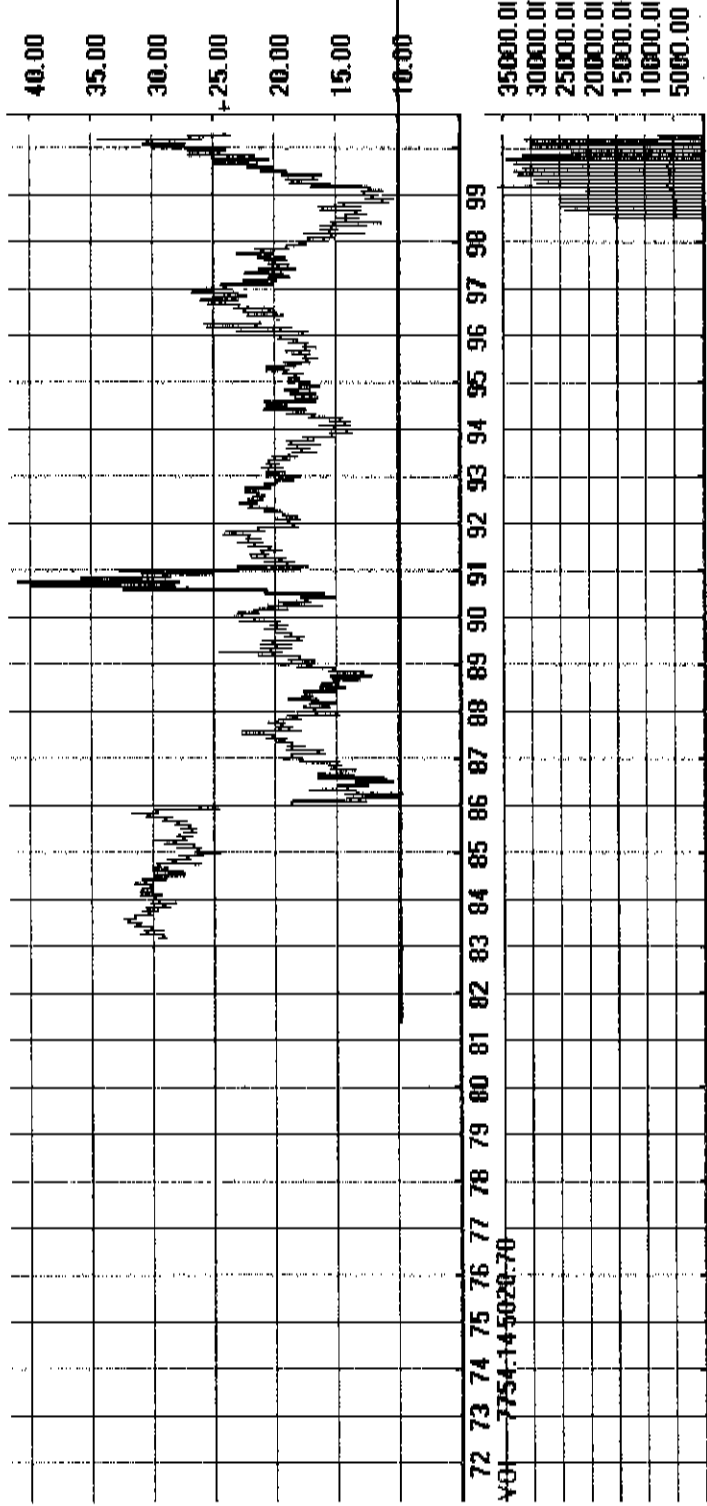
Last

Change

24.10

Day's Range 24.07 - 24.29

52-wk Range 15.61 - 34.37



13 YR MONTHLY
RESET
THAT IS
WNT
SUCH A
LARGE
MOVE !!

72	73	74	75	76	77	78	79	80	81	82	83	84	85	86	87	88	89	90	91	92	93	94	95	96	97	98	99
VOI-7754-145020-70																											
35000.01																											
30000.01																											
25000.01																											
20000.01																											
15000.01																											
10000.01																											
5000.00																											

CO W Cocoa

Last

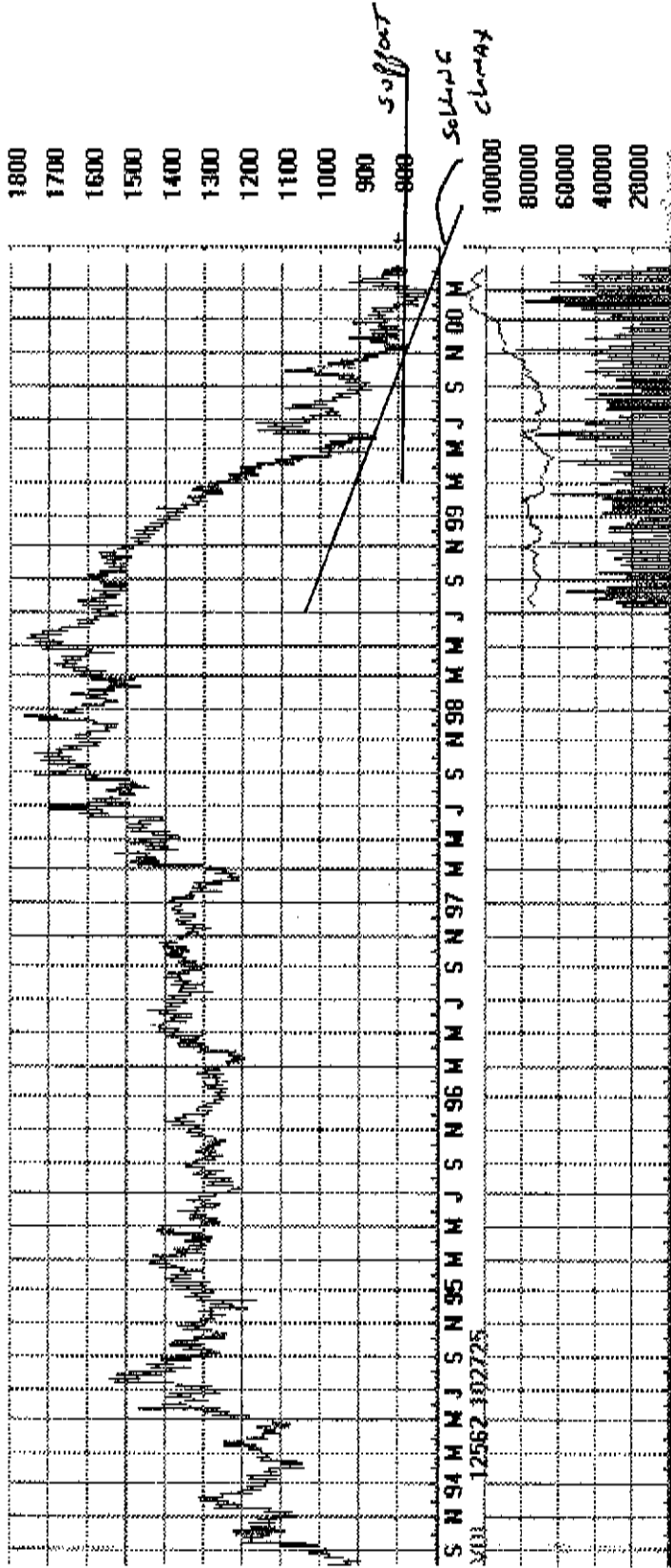
Change

803

Cocoa Weekly

Day's Range 801 - 813

52-wk Range 730 - 1168



GCW Gold

Last

Change

Weekly
Gold

Day's Range

52-wk Range

252.5 - 339.0

